

sa
partners

Together, the power to improve

OrgPulse

Understand Today
Build Tomorrow





“Without data, you’re just another person with an opinion.”

W. Edwards Deming





OrgPulse

Unlocking your Organisation's Potential

To effectively plan for your future you need to truly understand your current state. The S A Partners Org Pulse is an enterprise wide assessment tool that will enable you to build a deep understanding of your organisation's current state. We work with you to align the assessment to your vision and values ensuring we measure what matters.

The OrgPulse will help you identify your strengths, uncover opportunities and gaps which will allow you to develop a clear roadmap towards Operational Excellence.



What is OrgPulse

OrgPulse is a benchmark assessment that can be tailored to your organization, enabling you to get a deep understanding of how you are performing against your ideal results.

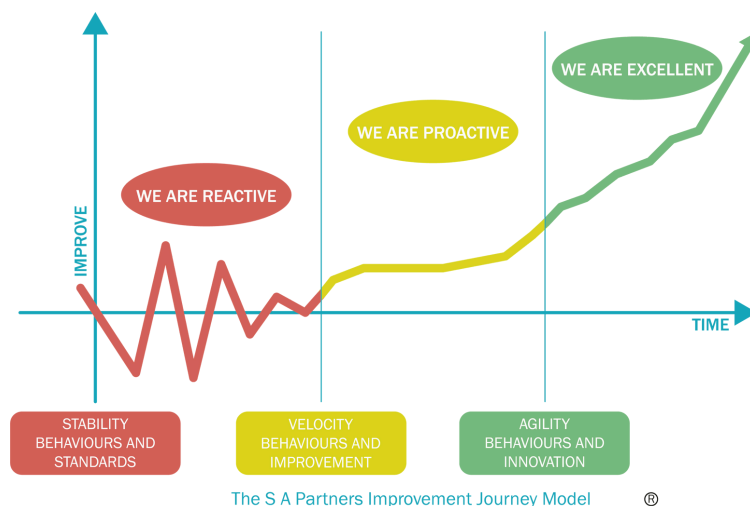
Using virtual, self-completion and face to face assessments you are able to get a true picture of your performance, which will enable you to make informed decisions based on data.

OrgPulse allows you to dig deep into your work systems and processes to enable you to develop a roadmap for improvement.

Why assess your maturity?

Achieving Enterprise Excellence will benefit your customers; team; stakeholders and shareholders. Understanding how you are performing today and defining your future state will help you drive profitability and productivity.

At S A Partners we have developed the improvement Journey Model to help organizations track their journey towards worldwide.



How it works



Benefits



- Data that can help you identify where to focus improvement.
- Opportunities are highlighted
- Teams and Individuals are engaged
- Regular benchmarks will enable you to track change
- See how you compare to other organizations, sectors or regions.
- Focus on adding customer-value

Engaging your team

Getting a true picture of your current state means engaging with the widest possible cross-section of your organisation.

We can do this in a number of ways:

- Self-Completion Assessments
- Team Sessions - virtual & face to face
- 1:2:1 interviews

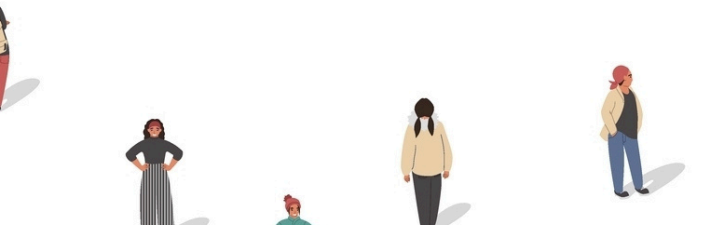
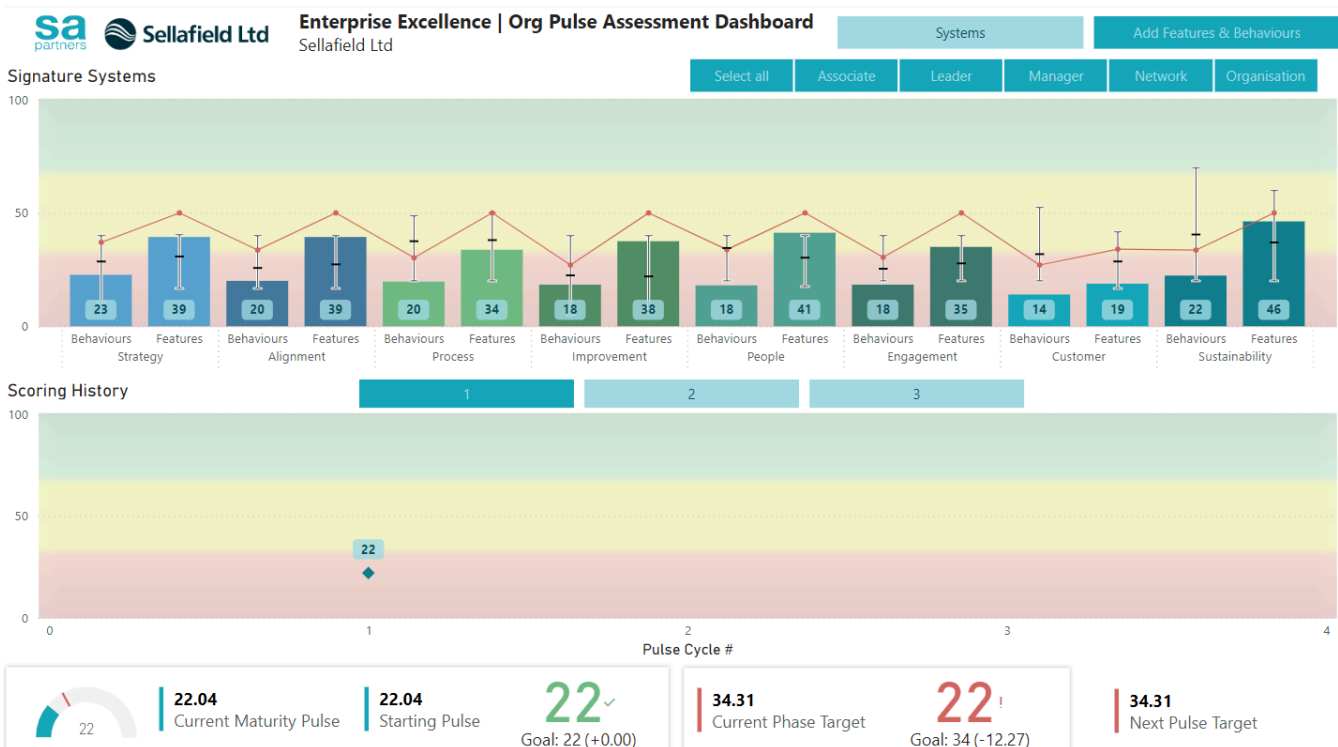
We recommend a combination of the three. The scale of engagement will depend on the size and structure of your organization.



Making it Visual!

Enabling your team to connect with the results is our primary goal. By developing easily understandable, interactive dashboards will allow you to dissect and pull the information that will help you on your journey.

OrgPulse is built using PowerBI with customizable dashboards.



Are you interested?

We can show you the benefits of OrgPulse in action. We can do this in person or virtually, dependent on your needs. We can also share with you a sample report to give you an idea of how the data could benefit your organization.

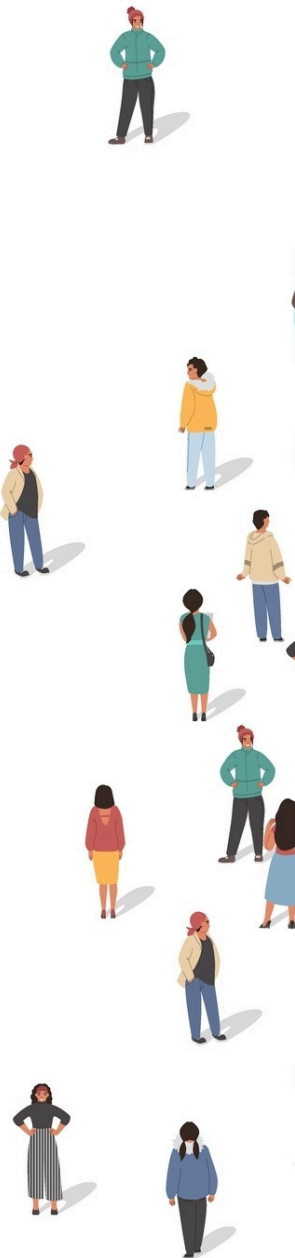
Contact us today to arrange a no obligation call or email info@sapartners.com.



Why work with S A Partners

We are committed to working together, with you to support your journey to Enterprise Excellence. Our diverse team is passionate about improvement and helping you identify and take advantage of the opportunities that can be identified from the OrgPulse.

As a team, we have been working with organizations large and small around the world since 1983. We are affiliates of the SHINGO Institute; Blanchard and TWI. Each of these partnerships enables us to bring best practice thinking to each of our clients.



S A Partners is a global consultancy & training company that works with customers on building Operational Excellence. We have been working with organizations in the Food & Drink sector for over 30 years.

As a company we strive to make a positive impact with our customers; our team and in the communities and environments in which we work.

Join our FREE virtual industry forums

LEAN FORUM - www.leanforum.co.uk

SHINGO FORUM - www.shingoforum.org

For further resources:

www.sapartners.com

info@sapartners.com

